



**BLOCKFORD**  
PAINT PROTECTION FILM

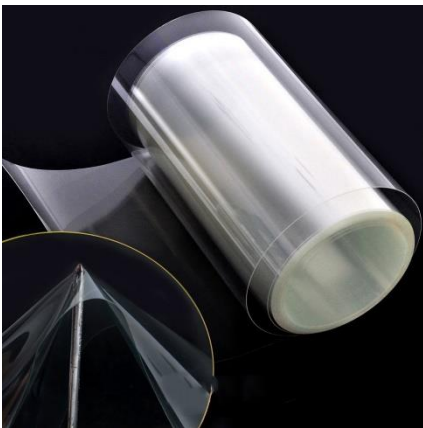
# **MERKAVA** **ROSH series**

**Technical Data Sheet**



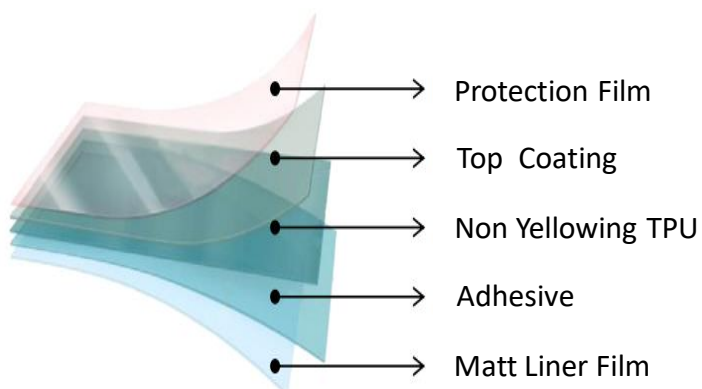


# MERKAVA \_ ROSH



MERKAVA **ROSH** series is a high performance clear-coated aliphatic polyurethane film formulated to protect the surface of vehicles from stone chips, abrasion and corrosion. It is one of the best TPU film used for automotive interior material and provides superb quality of workmanship. It can be used for interior and exterior decoration to improve the appearance of any vehicle or painted surface. ROSH is easy to apply, retains its gloss and resists yellowing and staining better. It also offers superior temperature resistance and self-cleaning performance for high durability and easy maintenance. Moreover, it helps set a headlight part off to advantage and enhance the value of automobile.

## Features and Structure



- High Glossy
- Anti- Water Spot
- Hydrophobic
- Anti-Yellowing
- Anti-Solvent
- Anti-Fouling
- Good Installation

## 1. PHYSICAL PROPERTIES

Properties		Value	Test Method
Thickness	Protective Film	50±5μm	Thickness gauge (1/1000)
	Top Coating Layer	10±1μm	
	TPU Film	100±5μm	
	Adhesive Layer	30±3μm	
	Release Liner	75±5μm	
Strength	Tensile Strength	21.8Mpa(222.3Kgf/cm <sup>2</sup> )	ASTM D882-18
	Elongation at Break	300%	ASTM D882-18
Adhesion	Adhesion Force	1600/inch	JIS K 6854-2
	Residual Adhesive	None	Put on painting plate then peel off with reverse direction after exposing to 80°C for 24hr, -8°C for 24hr, 20°C for 12hr in sequence

## 2. OPTICAL PROPERTIES

Properties	Value	Test Method
Gloss(%)	88	Gloss meter(60°): KS M ISO2813
Transmittance(%)	Min 91	ASTM D1003
Haze	1.8±0.5	ASTM D1003
Discoloring	ΔE 1.2/0.1	QUV Tester/1,000hrs/Xenon Arc 12,000W

## 3. Top Coating Function

Properties		Value	Test Method
Self-healing @RT			Copper brushing @RT (25°C) Stand-alone under RT((25°C)
hydrophobic	Contact angle	103°	ASTM D5946
Anti-Fouling		Easily Erasable	Name pen
Anti-water spot.			

## Shelf Life

---

MERKAVA recommends ROSH to be stored at +10°C~+32°C, and 40%~60% RH. The film should be used after purchase.

## Installation

---

MERKAVA ROSH series can be scratched extensively without harming it for proper fit. Also, it can be pulled back up if it is necessary to reposition. Generally, Generally, it is recommended to apply on wet surface

## Warranty

---

MERKAVA ROSH series gives a warranty to be free of any manufacturing or workmanship defects for three years from the date of purchase.

The warranty doesn't cover damage caused by erroneous application, vehicle involved in an accident and intentional misuse or wear. ROSH will replace the film that doesn't meet this warranty.

Limitation of remedies and liabilities are solely restricted to replacement of the defective film.

## Notice

---

The representations of performance and suitability for use are meant for only as a guide.